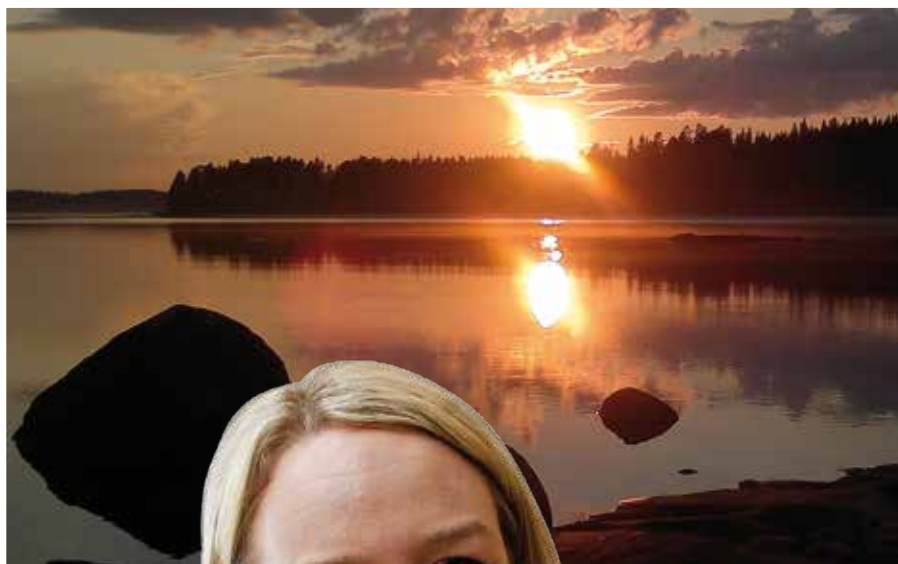




Beautiful Keuruu

• Finland •

.....
Come and enjoy,
Keuruu welcomes you
throughout the year!



Keuruu is a beautiful and lively town in Central Finland

A little under 300 kilometres from the capital, Helsinki, approximately 125 kilometres from Tampere Pirkkala Airport, and some 55 kilometres from the centre of Jyväskylä.

Keuruu's urban centre is built on four islands, and therefore our town is surrounded by the clean Keurusselkä lake. Our municipality has over three hundred lakes, offering good opportunities for boating, fishing and swimming in the summer. In the winter, it is possible to ski and skate, or swim in our spa-like swimming centre.





Keuruu is a cosy and safe destination, whether you are travelling alone, with your family or as part of a bigger group.



Keuruu offers good opportunities for an active holiday

There are two sports parks, a swimming centre and a bowling alley in the vicinity of the centre of Keuruu. In addition, there are marked paths for skiing and hiking. If you are interested in a basic course in golf, shooting with a black powder gun or archery, this is also possible. Trips on a horse, ATV or handcar are also possible by order! You can paddle a canoe or row on the lake.

Yesterday's atmosphere and culture

The culturally and historically significant Old Keuruu district, with two of Keuruu's five churches, is located in the heart of the centre of Keuruu. The old wooden church was completed in 1758, and it functions as a museum church. Next to the red brick new church (1892) is Keuruu Local Museum, comprised of several buildings.

The area also features the railway station chosen as the most beautiful station building in Finland, Kamana Tourist Centre and the Old Rectory. An exhibition at the railway station displays cuddly old teddy bears, dolls and Finnish enamelware, among other objects.

The stone barn today functions as a tourist centre around the year. A restaurant, a boutique selling wonderful women's clothing and home-made jewels and interior decoration products, a museum and a natural therapy centre are all under the same roof. The Old Rectory, open daily during the summer, is a charming place for dining and coffee with its stylish rooms, and it is located in the same courtyard.

There are several summer granaries and shops selling products from Keuruu all year round in the Old Keuruu district. There

are, among other things, local handicrafts and art for sale in the barns. You can find genuine Keuruu handicrafts and locally sourced organic products in the shops.

You will have a good time in Keuruu!

The best way to see the lake scenery is to take a tour on the genuine paddle-wheeler Elias Lönnrot. The ship offers scheduled cruises in Keuruu and to the neighbouring town, Mänttä. The ship can carry 150 passengers, and it has a restaurant and a sun deck.

You can experience the atmosphere of real steam locomotives by visiting the Steam Locomotive Park of Haapamäki, with several types of steam locomotives, exhibitions, playgrounds for children and a restaurant. The area features accommodation, a caravan area and dancing at weekends.

The Pihlajavesi Wilderness Church is an idyllic little church that is rugged, yet beautiful. It was built in secret in the middle of the wilderness a long time ago. Today, you can get near the church by car and simply go in.

There are also sites where you can see animals, such as sheep, chicken, cows and other domestic animals in Keuruu.

Keuruu, a town with a thousand events

The market in the town centre is open on Mondays and Thursdays from 8 a.m. to 1 p.m. in the summer. There are almost a thousand events in Keuruu a year, such as cruises, dancing, concerts, exhibitions, sports and fairs. Come visit us!

Genuine Keuruu products include organic products, vegetarian rolls, linen clothing, handicrafts, wooden products and ironware from the blacksmith.



Keuruu offers good services and high-quality accommodation in a hotel, B&Bs and leisure homes, among others. For information about the different accommodation options, visit our website; you can also book them easily on the internet.



Keuruu's neighbours

Multia (Kalevantuli candle workshop, nature trails)	19 km / 15 minutes
Petäjävesi (Unesco World Heritage Site Old Church)	25 km / 20 minutes
Mänttä-Vilppula (Serlachius Museums – Gustaf Museum and Gösta Art Museum)	30 km / 25 minutes
Ähtäri (Ähtäri Zoo)	60 km / 50 minutes

Distances

Tampere Pirkkala Airport–Keuruu	125 km / 90 minutes
Jyväskylä Tikkakoski Airport–Keuruu	80 km / 60 minutes
Jyväskylä–Keuruu	55 km / 45 minutes
Helsinki Airport–Keuruu	260 km / 3 hours 15 minutes
Lappeenranta Airport–Keuruu	280 km / 3.5 hours

Übernachtungsziele und Reservierungen

www.booking.com
www.lomarengas.fi
www.huvila.net

Scandia Rent **Hertz** **AVIS**

Keuruu Tourist Office

Keuruuntie 7,
 FI-42700 Keuruu, Finland
info@keuruu.fi, +358 (0) 40 572 5640
www.visitkeuruu.fi

